

## Top 3 IP Scanners for Linux

Submitted by ingram on Mon, 12/12/2011 - 10:09pm

Top IP Scanners

Unlike port scanners, which scan for open ports, IP scanners simply try to find hosts that are alive on a network. If you are searching for IP scanners for Windows, you will surely find an abundant supply of them. In Linux, however, you may be searching a little harder to find a quality, easy to use IP scanner. Here is a list of the 3 best IP scanners for Linux, rated on speed and usability.

1. **arp-scan** - Arp-scan is an easy-to-use tool that can find alive hosts on a network. It sends ARP packets to specified hosts and displays any responses. I rated arp-scan #1 because of its simplicity and speed. By simply adding the `-l` switch to arp-scan, it will automatically determine the network settings and scan the network of the first adapter. It also scanned the network the fastest. To install arp-scan:

Ubuntu: **`sudo apt-get install arp-scan`**

OpenSuse (12.1):

**`wget http://download.opensuse.org/repositories/security/openSUSE_12.1/i586/arp-scan-1.8-1.1.i586.rpm`**

**`sudo rpm -i arp-scan-1.8-1.1.i586.rpm`**

The easiest way to scan the network you are in is to run any of the following commands (they all do the same thing):

**`sudo arp-scan -l`** #Scans the local network

**`sudo arp-scan 192.168.1.0/24`** #Scans 192.168.1.0 255.255.255.0

**`sudo arp-scan 192.168.1.1-192.168.1.254`** #Scans the obvious range

You will see results like this:

`192.168.1.10 00:0c:29:a4:16:48 VMware, Inc.`

`192.168.1.11 00:0e:2e:3a:c1:2d Edimax Technology Co., Ltd.`

`192.168.1.20 00:e0:81:31:97:47 TYAN COMPUTER CORP.`

Total Time: 1.381 seconds

2. **nmap** – Nmap, better known for its port scanning abilities, is also quite suitable as an IP scanner. I rated nmap #2 because it returned the results slightly slower than arp-scan, and there is no -I switch to automatically determine the network settings, as with arp-scan. To install:

Ubuntu: ***sudo apt-get install nmap***

OpenSuse: ***sudo zypper install nmap***

To scan for alive hosts on a network, run any of the following commands (they all do the same thing):

***sudo nmap -sP 192.168.1.0/24*** #Scans 192.168.1.0 255.255.255.0

***sudo nmap -sP 192.168.1.1-254*** #Scans the obvious range

You will see results like this:

*Host 192.168.1.11 is up (0.0089s latency).*

*MAC Address: 00:0E:2E:3A:C1:2D (Edimax Technology Co.)*

*Host 192.168.1.20 is up (0.00063s latency).*

*MAC Address: 00:E0:81:31:97:47 (Tyan Computer)*

*Host 192.168.1.21 is up (0.00099s latency).*

*MAC Address: 00:E0:81:31:45:26 (Tyan Computer)*

Total Time: 1.82 seconds

3. **Angry IP Scanner** – This tool, perhaps better known to Windows users, is also available on Linux, as a Java application. I rated Angry IP Scanner #3 because it is significantly slower than arp-scan and nmap, however, it has a nice and simple GUI that many people find intuitive. To check if you have Java installed, run this command:

***java -version***

To install Java, run this command:

Ubuntu : ***sudo apt-get install openjdk-6-jre***

OpenSuse: ***sudo zypper install java-1\_6\_0-openjdk***

You can download the Angry IP Scanner here:

<http://www.angryip.org/w/Download> <sup>[1]</sup>

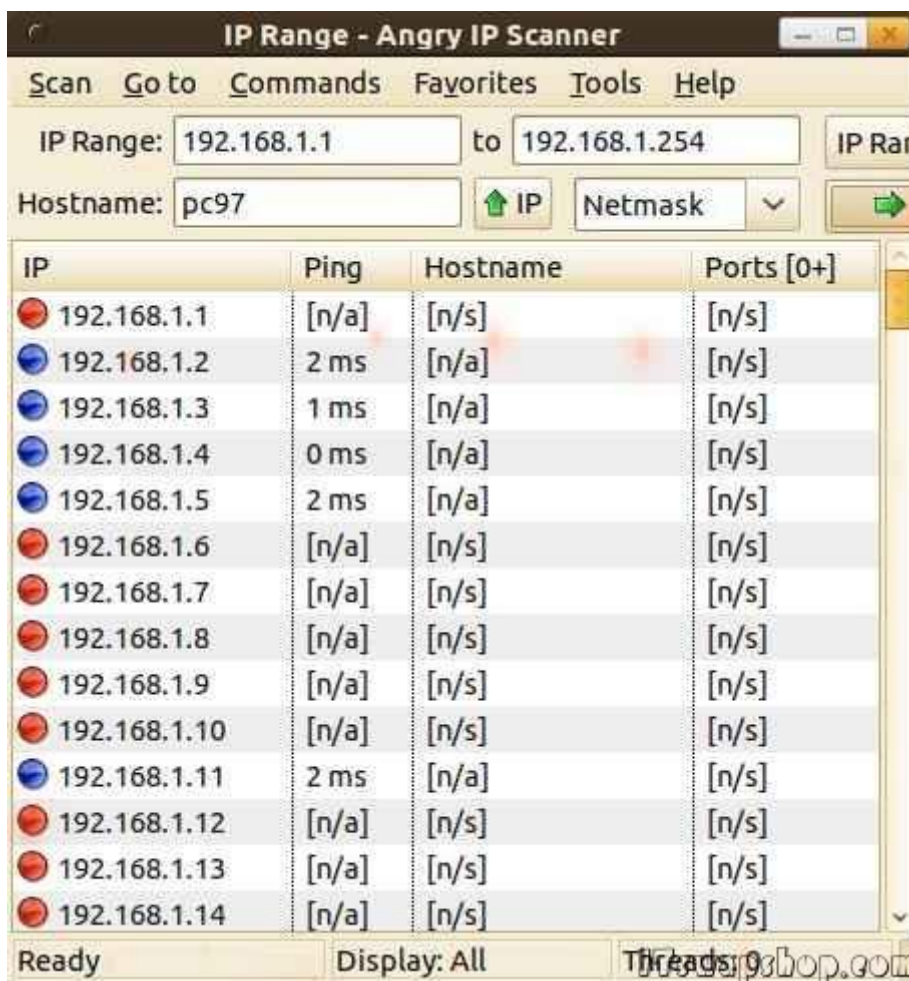
Ubuntu: **wget http://sourceforge.net/projects/ipscan/files/ipscan3-binary/3.0-beta6/ipscan\_3.0-beta6\_i386.deb**

**sudo dpkg -i ipscan\_3.0-beta6\_i386.deb**

OpenSuse: **wget http://sourceforge.net/projects/ipscan/files/ipscan3-binary/3.0-beta6/ipscan-3.0\_beta6-2.i386.rpm**

**sudo rpm -i ./ipscan-3.0\_beta6-2.i386.rpm**

There are 32 and 64 bit Deb and RPM files for Debian/Ubuntu and Fedora/RedHat/Suse/Mandriva. Angry IP Scanner is one of the few IP scanners for Linux that has a nice GUI. It's very simple to use. Simply enter the range of IP addresses you want to scan and click Start:



Total Time: 25.9 seconds

As you can see, there are several high quality and fast IP scanners for Linux. If you have a favorite that isn't listed here, feel free to leave a comment.

[Privacy Policy](#)

support @ itswapshop . com

---

**Source URL:** <http://itswapshop.com/articles/top-3-ip-scanners-linux?page=0>

**Links:**

[1] <http://www.angryip.org/w/Download>